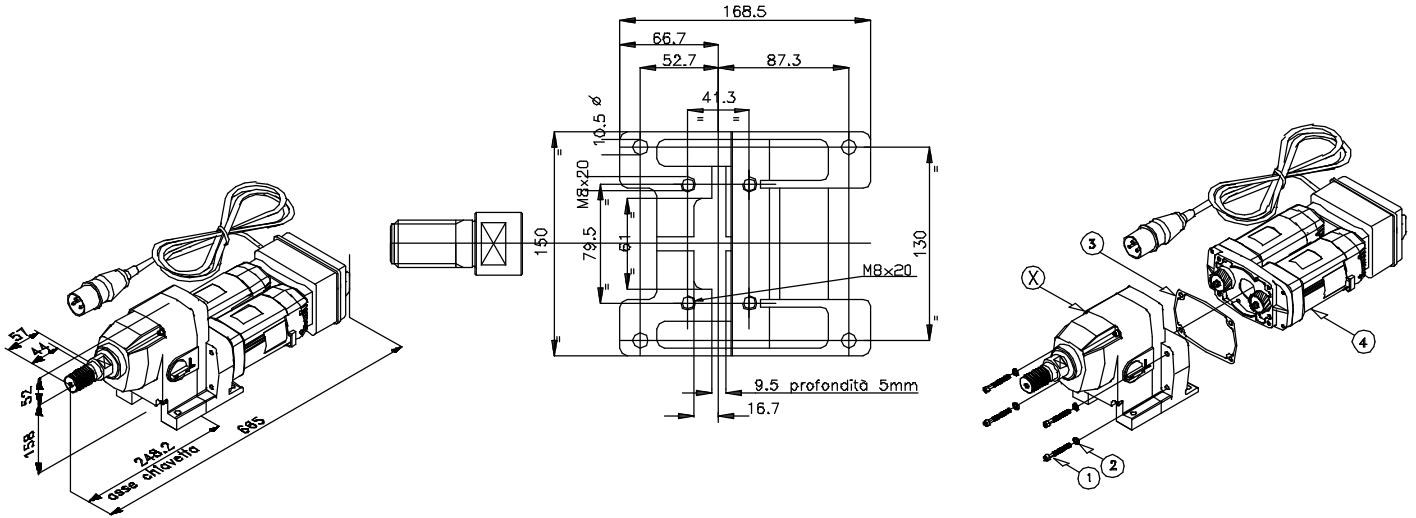


DATI TECNICI - PERFORMANCE DATA - TECHNISCHE DATEN - EN DONNÉES TECHNIQUES - TEKNISCHE DATA - DATOS TECNICOS				
DATI TECNICI - PERFORMANCE DATA - TECHNISCHE DATEN - TEKNISCHE DATA - DONNETS TECHNIQUES - DATOS TECNICOS				
Tensione - Voltage - Spannung - Spaending - Tension - Tension	v	230 (220 - 240)	115 (110 - 120)	
Corrente di targa - Nameplate Amps - Stromaufnahme - Amp. - Amp,rage - Corriente de carga	A	16	32	
Potenza di targa - Nameplate Power - Leistungsaufnahme - Watteffekt - Puissance entr,e - Potencia de carga	W	3500	3500	
Potenza resa - Output power - Leistungsabgabe - Afgivende effekt - Puissance sortie - Potencia ce salida	W	2800	2800	
Frequenza - Frequency - Frequenz - Frekvens - Fr,quence - Frecuencia	Hz	50 - 60	50 - 60	
Modello - Type - Modell - Type - ModŠle - Modelo		BITURBO L	BITURBO H	BITURBO V
Giri a vuoto - No-load RPM - Leerlaufdrehzahl - Omdrejninger, ubelastede - Vitesse ... vide - R.P.M. en vacio	min ⁻¹	220-340	600-900	1200-1850
Giri a carico - Full-load RPM - Lastdrehzahl - Omdrejninger, belastede - Vitesse en charge - R.P.M. en carga	min ⁻¹	140-215	240-570	800-1200
Coppia (a 3500 W) - Torque - Drehmoment - Moment - Couple - Par	Nm	192-123	114-47	34-23
Coppia di taratura frizione - Clutch torque - Drehmoment der Rutschkupplung - Justeringsnogle til kobling - Couple de friction - Par ce embrague	Nm	226	176	176
Gamma di foratura - Drilling Range - Bohrkronen - Borstørrelser - Capacit, de forage - Gama ce perforacion	mm	200-400	70-250	30-120
Quantità e tipo di grasso - Quantity and type of grease - Menge und Typ des Fett - Mængde og type af fedt - Quantit, et type de graisse - Cantidad y tipo ce grasa	gr.	LUBCON THERMOPLEX ALN 250/00 EP		
		70	100	100
Quantità e tipo d'olio - Quantity and type of oil - Menge und Typ des Ols - Mængde og type af olie - Quantit, et type de huile - Cantidad y tipo de aceite	gr.	E.P. 68 - 150cST (ex. ESSO Spartan E.P.68, E.P. 150) 350		
Attacco corona - Bit connection - Bohrkronenanschluss - Adapter - Raccord - Acopiamiento ce corona		1 1/4 UNC		
Peso - Weight - Gewicht - Vaegt - Poids - Peso	Kg.	18,8		
Frizione meccanica in bronzo - Clutch system with brass rings - Sicherheitskupplung mit Bronzescheiben - Koblingssystem med bronzeskiver - Système d'embrayage avec bagues en bronze - Sistema de embrague con anillos ce	bronze			
Indicatori di carico (Jed verde/rosso) - Load and ove'rioad indicators (green/red led) - Normal-u. Überlastanzeige durch grEnlrot Leuchtdioden - Overbelastningsindikatorer (gront/rodt) - Voyant lumineux de surcharge rouge et vert pour fonctionnement normal - Indicador ce sobrecarga (luz verde/roja)				

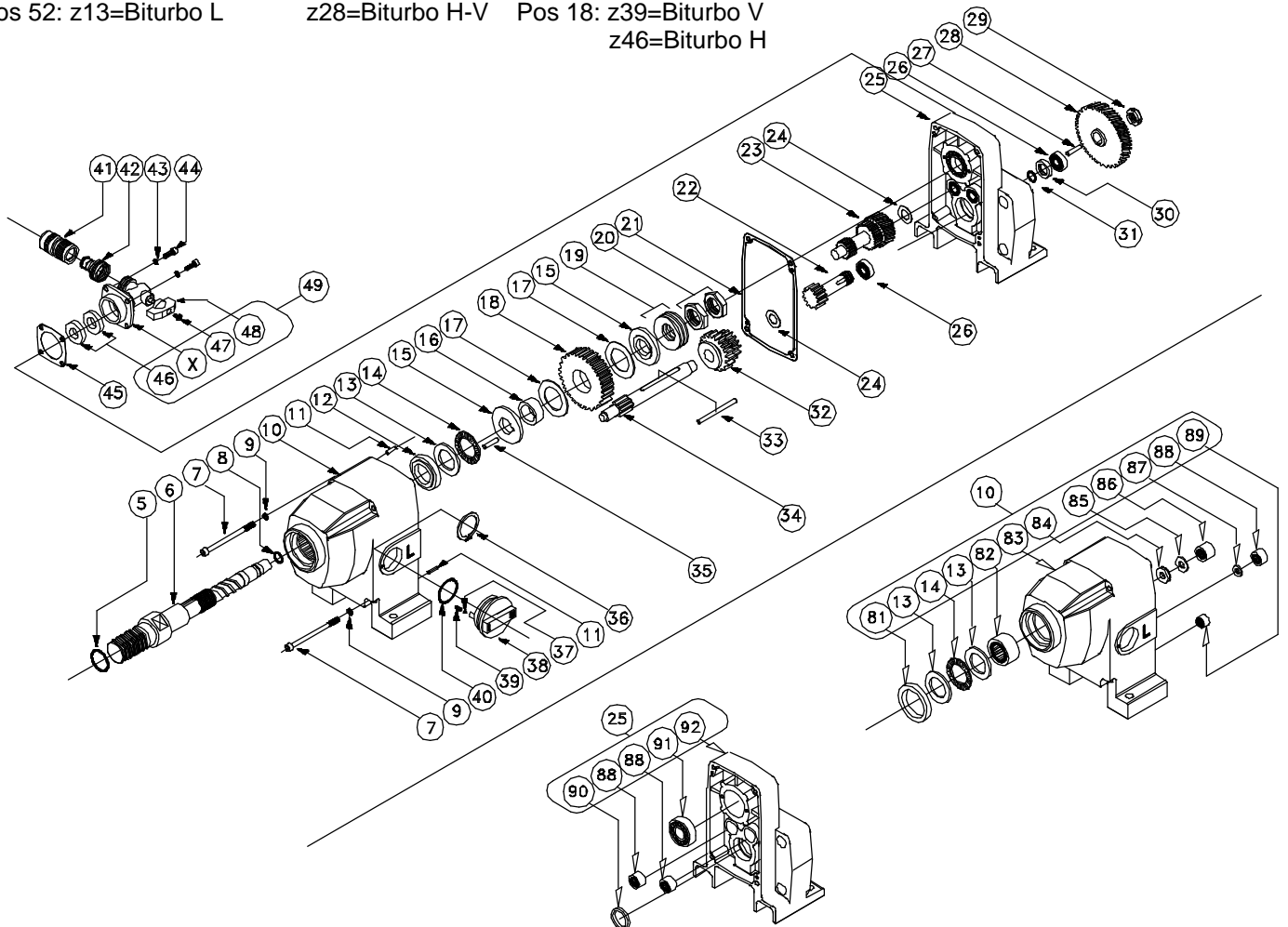


pos 52: z13=Biturbo L

z28=Biturbo H-V

Pos 18: z39=Biturbo V

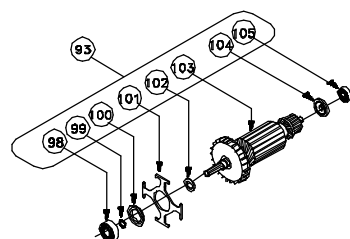
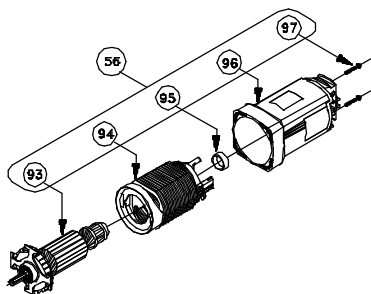
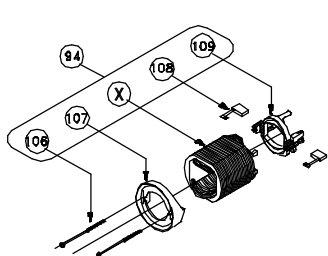
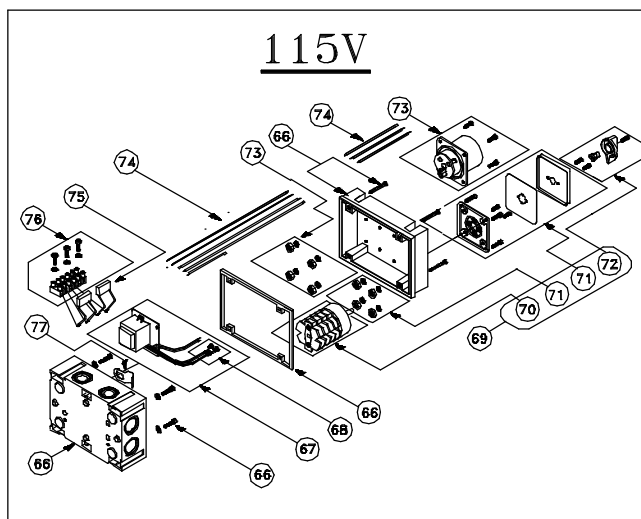
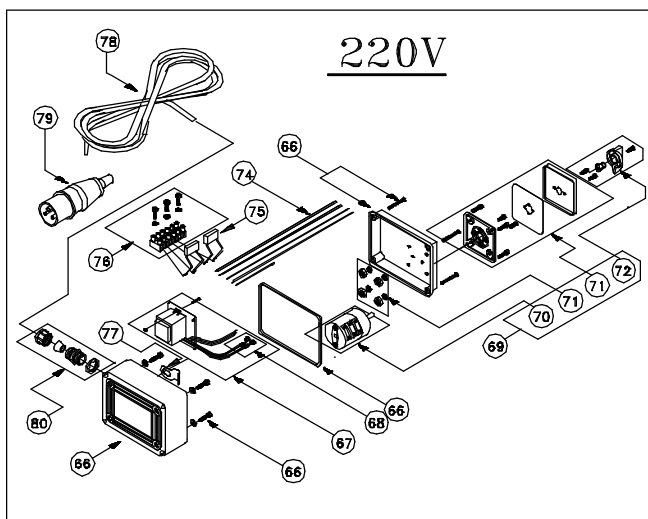
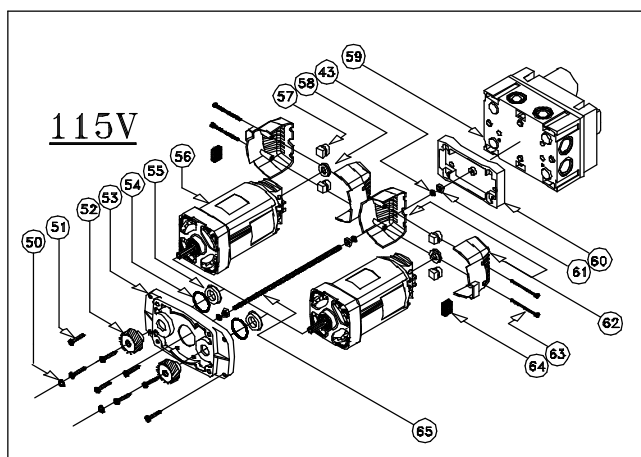
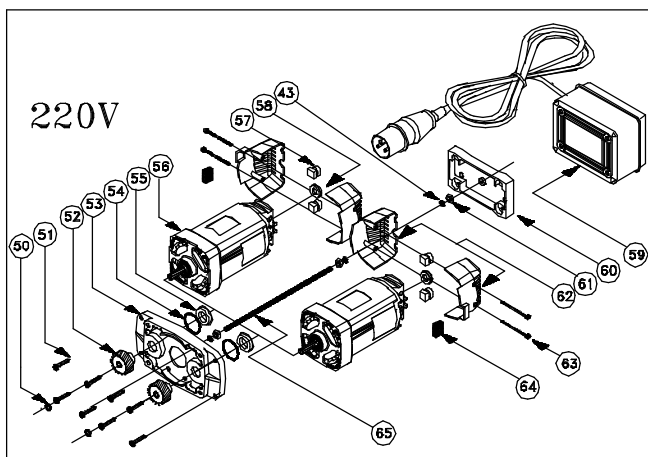
z46=Biturbo H



CARDI BIMOTORE L V H



pos 52: z13=Biturbo L pos 18: z39=Biturbo V
 z28=Biturbo H-V z43=Biturbo H





BIMOTORE L H V

ITEM	PART.NUMB.	Q.TY		ITEM	PART.NUMB.	Q.TY		ITEM	PART.NUMB.	Q.TY	
		115V	220V			115V	220V			115V	220V
1	500229	4	4	48	501166	1	1	92	500187	1	1
2	500230	4	4	49	500121	1	1	93	500211	-	2
3	500182	1	1	50	930100	2	2	-	500212	2	-
4	500702 x bim. H-V	-	1	51	930930	8	8	94	940480	-	2
-	500705 x bim. L	-	1	52	500110 x bim. L	2	2	-	935991	2	-
-	500703 x bim. H-U	1	-	-	500244 x bim. H-V	2	2	95	938332	2	2
-	500706 x bim. L	1	-	53	500188	1	1	96	948162	2	2
5	500100	1	1	54	500245	2	2	97	930080	4	4
6	500124	1	1	55	930909	2	2	98	500210	2	2
7	500043	4	4	56	CS 20-001	-	1	99	930080	2	2
8	500034	1	1	-	CS 20-002	1	-	100	931067	2	2
9	500047	4	4	57	500057	4	4	101	931066	2	2
io	500139	1	1	58	500104	2	2	102	931062	2	2
ii	500046	2	2	59	500624	-	1	103	500211	-	2
12	500130	1	1	-	500289	1	-	-	500212	2	-
13	500134	3	3	60	500280	1	1	104	938331	2	2
14	500133	2	2	61	500247	3	3	105	501947	2	2
15	500569	2	2	62	500060	2	2	106	931072	4	4
16	500568	1	1	63	930752	4	4	107	931073	2	2
17	500567	2	2	64	500251	2	2	108	933373	-	4
18	500301 x bim. V	1	1	65	500246	1	1	-	933372	4	-
-	500126 x bim. H-L	1	1	66	500625	-	1	109	935747	2	2
19	500137	3	3	-	500290	1	-	110	501424	1	1
20	500138	2	2	67	500261	-	1	111	500043	5	5
21	500014	1	1	-	500287	1	-	112	501179	2	2
22	500177	1	1	68	500264	1	1	113	501452	1	1
23	500175	1	1	69	500265	-	1	114	501453	1	1
24	500040	2	2	-	500288	1	-	115	502230 x bim. H-V	-	1
25	500236	1	1	70	500677	-	1	-	502231 x bim. L	-	1
26	502407	2	2	-	500678	1	-	-	502232 x bim. H-V	1	-
27	500232	1	1	71	500676	1	1	-	502233 x bim. L	1	-
28	500176 x bim. L	1	1	72	500675	1	1				
-	1 500234 x bim. H-V	1	1	73	500439	1	1				
29	500231	1	1	74	500267	-	1				
30	500180	1	1	-	500291	1	-				
31	500235	1	1	75	501646	1	1				
32	500181	1	1	76	500255	-	1				
33	500152	1	1	-	500285	1	-				
34	500116 x bim. H-L	1	1	77	501700	1	1				
-	500783 x bim. V	1	1	78	500436	1	1				
35	500106	1	1	79	500072	1	1				
36	500142	1	1	80	500626	1	1				
37	500119	1	1	81	500031	1	1				
38	500195	1	1	82	500135	1	1				
39	500120	1	1	83	500122	1	1				
40	500141	1	1	84	500024	1	1				
41	500101	1	1	85	500025	1	1				
42	500193	1	1	86	500136	1	1				
43	500048	7	7	87	500080	1	1				
44	500045	4	4	88	500028	3	3				
45	500033	1	1	89	500027	1	1				
46	500032	2	2	90	500252	1	1				
47	500606	1	1	91	500021	1	1				